

## MV "REM MISTRAL"

SHIP DESIGN  
CLASSIFICATION  
BUILDER  
PORT OF REGISTRY  
FLAG  
MMSI  
IMO NUMBER  
DELIVERY  
CALL SIGN

VS 485 MK III  
BUREAU VERITAS  
HELLESØY VERFT AS, HULL NO 149  
NASSAU  
BAHAMAS  
311000256  
9620982  
JUNE 2012  
C6BG5

OWNER: Rem Offshore  
REGISTERED OWNER: Rem PSV AS

MANAGER: Rem Maritime AS  
N-6092 Fosnavåg

### MAIN DIMENSIONS

LENGTH O.A	85.00m
LENGTH P.P	77.65m
BREADTH	20.00m
MAX DRAFT	7.16m
GROSS TONNAGE	4,344mt
NET TONNAGE	1,800mt
DEADWEIGHT	5,549mt
LIGHTWEIGHT	3,072mt

### CLASS NOTATIONS

SUPPLY VESSEL OIL RECOVER SHIP -OIL PRODUCT,  
UNRESTRICTED NAVIGATION  
COMF-NOISE 3 COMF-VIB 3,  
CPS(WBT), AUT-UMS,  
SYS-NEQ-OSV, CLEANSHIP SUPER,  
ICE CLASS ID, DYNAPOS AM/AT R,  
SDS, IG,  
ERN 99.99.99.96, NOFO 2009



## OUTLINE SPECIFICATION

### MACHINERY AND PROPELLER PLANTS

Main Engines/Gen.:	4x 1825kW CAT 3516B-DSG
Emergency Generator:	1x 200kW Volvo Penta D9A
Main Propulsion:	2x 2300kW SteerProp SP 35 CRP
FWD Azimuth:	1x 880kW Brunvoll
FWD Tunnel Thrusters:	2x 1000kW Brunvoll

### CARGO CAPACITIES NOFO 2009

Deck Cargo:	2800mt
Deck Area:	1004m <sup>2</sup> , 59.8m x 16.8m free space
Deck Strength:	10mt/m <sup>2</sup>
Fuel Oil:	903m <sup>3</sup>
Liquid Mud (SG 2.8):	703m <sup>3</sup> , Agitators in all tanks
Brine (SG 2.5):	418m <sup>3</sup>
Base Oil:	203m <sup>3</sup>
Pot Water:	1007m <sup>3</sup>
Drill Water/Ballast:	2470m <sup>3</sup>
Methanol:	145m <sup>3</sup>
Special Product:	146m <sup>3</sup>
Slop:	186m <sup>3</sup>
ORO:	1803m <sup>3</sup>
Cement/Bar/Bent:	440m <sup>3</sup>

### ENVIRONMENT AND CARGO CONTROL PLANTS

Incinerator:	Saniterm SH 20 SM/SR
Steam generator:	1600kW, Parat Halvorsen AS
Hot Liquid Cargo Tank:	1x 146m <sup>3</sup>
Tank Cleaning:	Per Gjerdrum AS
Special Cargo Tanks:	Stainless Steel Tanks for Methanol
Inert Gas System:	N2 Generator, membrane separation
Cargo Manifolds:	Centre/Aft each side inside "Safe haven"

### NAVIGATION

Bridge Consoles:	Aft, fwd. and both Wings Operation
Control Office:	Located on Bridge
Autopilot:	Furuno AP 50
DP System:	Kongsberg K Pos DP 2
Joystick System:	Kongsberg C-Joy Constant
DP Motion System 1:	Seatex MRU 2
DP Motion System 1:	Seatex MRU 5
Fanbeam:	Kongsberg Laser Mk 4,2
DGPS:	2x Furuno GP 150
Wind Sensor:	2x Kongsberg Maritime
Radar 1:	Furuno FAR 2137 S
Radar 2:	Furuno FCR 2827 Chart Radar
Echo Sounder:	Furuno FE 700
Gyro:	3x Simrad GC 80
Speed Repeater:	Skipper IR 300
VDR:	Furuno VR 3000
GPS:	2x Furuno GP 150
Bridge Watch:	VICO system NAUT/OSV
ECDIS:	Tecdis T 2138
Speed log:	Furuno DS 80

### SPEED AND FUEL CONSUMPTION

Full speed:	15.0 knots, 21.5 mt/d
Service speed:	12.5 knots, 12.0 mt/d
Economic speed:	11.0 knots, 9.7 mt/d
DP operation:	4.8 mt/d at position keeping
Harbour mode:	1.4 mt/d

### CARGO HANDLING EQUIPMENT

1x TTS Marine	3mt/15m GPK knuckle crane
1x TTS Marine	3mt/15m GPT telescopic jig
1x NDM SWM	8mt capstans aft
6x NDM SWL	3mt cargo securing winches
1x NDM TU SWL	15mt Tugger Winch

### LIFE SAVING EQUIPMENT

Ship Certificate:	23 persons
Life Rafts:	4x 25 persons Unitron
MOB:	1x NORSAFE
MOB Davit:	1x HLT 3500 TTS
Survival Suits:	23 SOLAS Immersion Suits
	Survival suits according to rules

### COMMUNICATION

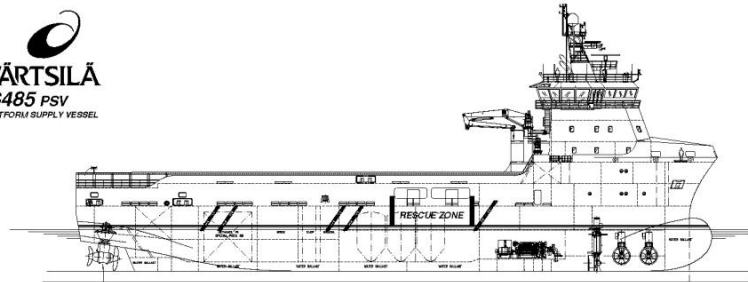
Navtex:	Furuno NX-700 B
Radar Transponder:	2x Jotron Tron SART
DSC Terminal:	Furuno FS-2570 C
AIS:	Furuno FA 150
EPIRB manual:	Jotron 45 SX
EPIRB Free Float:	Jotron Tron 40 S Mk II
Radio Station:	SSB, MF, HF, Furuno FS-1570
VHF Portable:	3x Jotron Tron TR 20 GMDSS
VHF Station:	Furuno FM-8800 S
UHF Portable:	5x Motorola GP 340
Inmarsat C:	Furuno Felcom 15
Intercom:	Zenitel ACM 144 66/VO
Sound System:	Vingtor VSS 111
Emergency:	Vingtor VSP 211 L
PA System:	Zenitel VPA 120, 240 and 400

Sat. Communication:	+47 55 62 81 53
Mobile Phone NOR:	+47 46 90 79 06
Mobile Phone UK:	+44 77 33 33 50 14
Vessel E-Mail:	<a href="mailto:captain@mistral.remoffshore.no">captain@mistral.remoffshore.no</a>

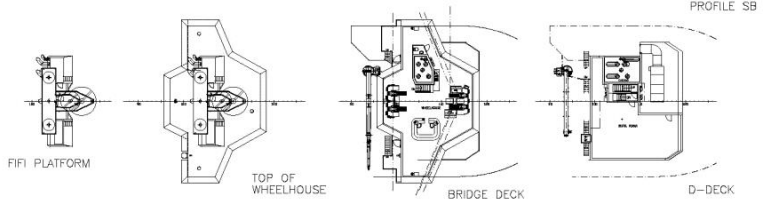
### ACCOMMODATION

Outfitted for 22 persons in spacious and comfortable facilities.	
Single Cabins:	15 with bathrooms
Double Cabins:	4 with bathrooms
Hospital:	1 Highest standard
Office:	1 fully outfitted
Day Room:	2 comfortably outfitted
Gymnasium:	1 fully outfitted
Entertainment:	In Day Rooms and all Cabins
Antiroll Tank:	1x 440m <sup>3</sup> + 1x 160m <sup>3</sup>

**WÄRTSILÄ**  
**VS485 PSV**  
 PLATFORM SUPPLY VESSEL



- DECK 001 - 002 m x 6
- DECK 002 - 003 m x 6
- DECK 003 - 004 m x 6
- DECK 004 - 005 m x 6
- DECK 005 - 006 m x 6
- DECK 006 - 007 m x 6
- DECK 007 - 008 m x 6
- DECK 008 - 009 m x 6
- DECK 009 - 010 m x 6



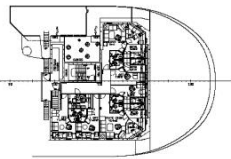
PROFILE SB

FIFI PLATFORM

TOP OF WHEELHOUSE

BRIDGE DECK

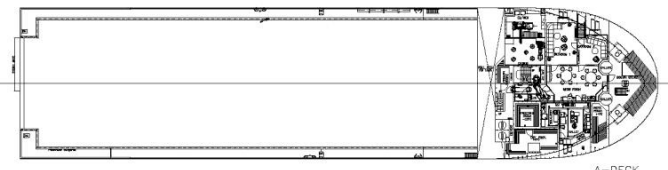
D-DECK



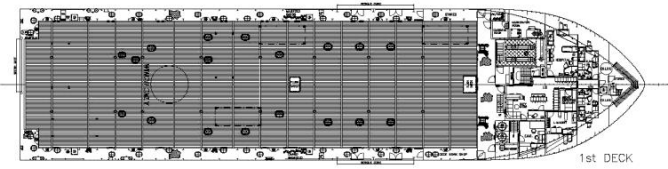
C-DECK



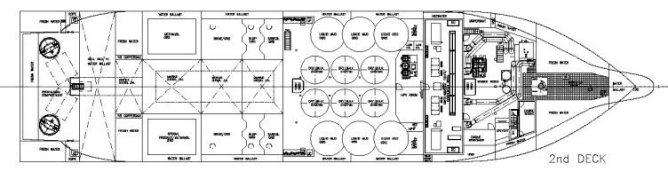
B-DECK



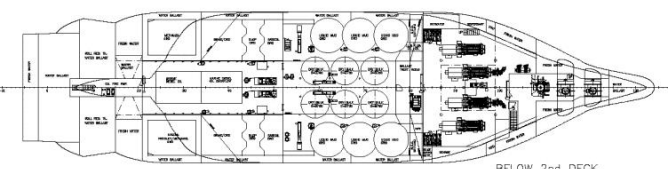
A-DECK



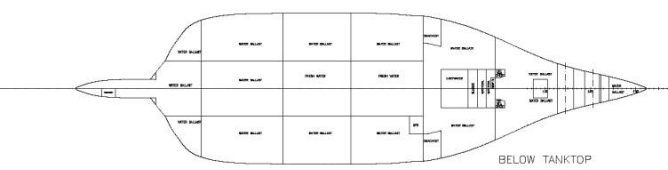
1st DECK



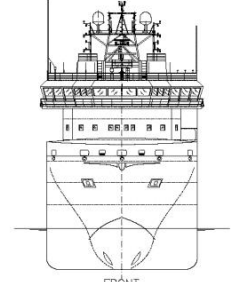
2nd DECK



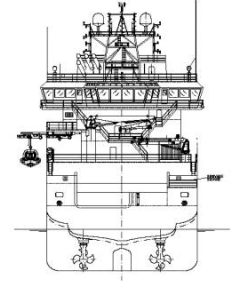
BELOW 2nd DECK



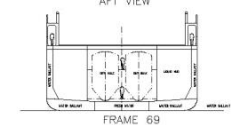
BELOW TANKTOP



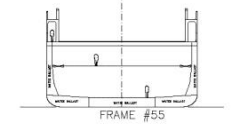
FRONT



AFT VIEW



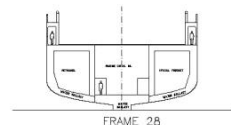
FRAME 69



FRAME #55



FRAME 38



FRAME 28

CABIN PLAN

Deck	Room	Quantity	Notes
C-DECK	Cabin	8	CABINS
D-DECK	Cabin	10	CABINS
A-DECK	Cabin	2	CABINS
1st DECK	Cabin	2	CABINS
TOTALS		22	

PRINCIPAL PARTICULARS:

LENGTH OVER ALL	65.00 m
LENGTH BETW. PERP.	77.70 m
BREADTH	20.00 m
DEPTH TO 1st DECK	8.60 m
DEPTH TO 2nd DECK	5.40 m
DECK AREA	1000 m <sup>2</sup>
FRAME SPACING	600 mm

PLATFORM SUPPLY VESSEL VS485 PSV		<b>H</b>	
GENERAL ARRANGEMENT		SCALE: 1:200	NO: 101
WÄRTSILÄ		NO: 4253	NO: G
101-001		1/1	