

## MV "REM INSULA"

SHIP DESIGN  
CLASSIFICATION  
BUILDER  
PORT OF REGISTRY  
FLAG  
MMSI  
IMO NUMBER  
DELIVERY  
CALL SIGN

VS 485 MK III  
BUREAU VERITAS  
HELLESØY VERFT AS, HULL NO 150  
BERGEN, NORWAY  
BAHAMAS  
258391000  
9634347  
FEBRUARY 2013  
LCXZ3

**OWNER:** Rem Offshore AS  
**REGISTERED OWNER:** Rem PSV AS

**MANAGER:** Rem Maritime AS  
N-6090 Fosnavåg

### MAIN DIMENSIONS

LENGTH O.A	85.60m
LENGTH P.P	77.70m
BREADTH	20.00m
MAX DRAFT	7.14m
GROSS TONNAGE	4,552mt
NET TONNAGE	1,839mt
DEADWEIGHT	5,397mt
LIGHTWEIGHT	3,250mt

### CLASS NOTATIONS

OIL RECOVERY SUPPLY VESSEL -OIL PRODUCT,  
UNRESTRICTED NAVIGATION  
COMF-NOISE 3      COMF-VIB 3,  
CPS(WBT),      AUT-UMS,  
SYS-NEQ-OSV,      CLEANSHIP SUPER,  
ICE,      DYNAPOS AM/AT R,  
SDS,      NOFO 2009  
ERN 99.99.99.99,



## OUTLINE SPECIFICATION

### MACHINERY AND PROPELLER PLANTS

Main Engines/Gen.:	4x 1,665kW Wartsila 9L20
Emergency Generator:	1x 175kW Volvo Penta
Main Propulsion:	2x 2,300kW f. pitch propellers
FWD Azimuth:	1x 880kW Brunvoll
FWD Tunnel Thrusters:	2x 1,000kW Brunvoll

### CARGO CAPACITIES NOFO 2009

Deck Cargo:	2,800mt
Deck Area:	1,004m <sup>2</sup> , 59.8m x 16.8m free space
Deck Strength:	10mt/m <sup>2</sup>
Fuel Oil:	897m <sup>3</sup>
Liquid Mud (SG 2.8):	695m <sup>3</sup> , Agitators in all tanks
Brine (SG 2.5):	418m <sup>3</sup>
Base Oil:	203m <sup>3</sup>
Pot Water:	1,050m <sup>3</sup>
Drill Water/Ballast:	2,629m <sup>3</sup>
Methanol:	146m <sup>3</sup>
Special Product:	146m <sup>3</sup>
Slop:	2x 90m <sup>3</sup>
ORO:	1,808m <sup>3</sup>
Cement/Barite/Bentonit:	330m <sup>3</sup>

### ENVIRONMENT AND CARGO CONTROL PLANTS

Incinerator:	Ulmatec Pyro
Cement plant:	Van Aalst
All pumps:	Ing. Per Gjerdrum
Electrical Boiler:	Parat Halvorsen AS
Equipment on deck:	Norwegian Deck Mach AS
Tank Cleaning:	Per Gjerdrum AS
Special Cargo Tanks:	Stainless Steel Tanks for Methanol
Inert Gas System:	Wilhelmsen N2 Generator
Cargo Manifolds:	Midship SB&PS and Aft

### NAVIGATION

Bridge Consoles:	Steinsvik Aft, Fwd and both Wings
Oper. Control Office:	Located on Bridge
Autopilot:	Simrad AP 50
DP System:	Kongsberg K Pos DP 2
Joystick System:	Kongsberg C-Joy Constant
DP Motion System 1:	Seatex MRU 2
DP Motion System 1:	Seatex MRU 5
Fanbeam:	Kongsberg Lazer Mk 4,2
DGPS:	2x Furuno GP 150
RADIUS:	1x Radius 1000 Kongsberg
Wind Sensor:	2x Kongsberg Maritime
Radar 1:	1x 10 cm/ S band, IMO ARPA
Radar 2:	1x 3 cm/ X band w/mini ARPA
Oil Radar:	According to NOFO Standard 2009
Echo Sounder:	Furuno FE 700
Gyro:	3x Simrad GC 80
Speed Repeater:	Skipper IR 300
VDR:	Furuno VR 3000
GPS:	2x Furuno GP 150
Bridge Watch:	VICO system NAUT/OSV
ECDIS:	Furuno Tecdis T - 2137
Speed log:	Skipper EML 224

### INDICATIVE SPEED & FUEL CONSUMPTION

Full speed:	15.0 knots, 20.2 mt/d
Service speed:	12.5 knots, 10,0 mt/d
Economic speed:	11.0 knots, 7,3 mt/d
DP operation:	5.3 mt/d at position keeping 1.6m Hs
St-by at field:	2.9 mt/d at one engine
Harbour mode:	2.0 mt/d

### CARGO HANDLING EQUIPMENT

1x Cargotec kn. crane	SWL 4.6mt/15m
2x Nor. Deck Mach AS	10mt capstans aft
1x Nor. Deck Mach AS	10mt capstan
6x Nor. Deck Mach AS	cargo securing winches
1x Nor. Deck Mach AS	Tugger Winch

### LIFE SAVING EQUIPMENT

Ship Certificate:	22 persons
Life Rafts:	Capacity 22 persons, each side
MOB:	Norsafe Rescue/MOB boat(28ft) for min 10 persons
MOB Davit:	Cargotec SOLAS approved
Survival Suits:	3x Full dry insulated Survival suits according to rules

### COMMUNICATION

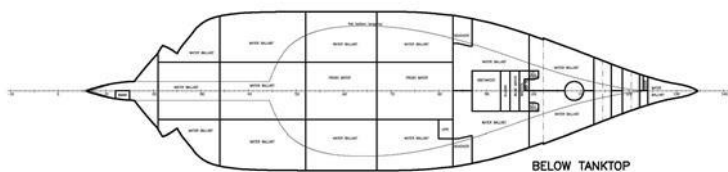
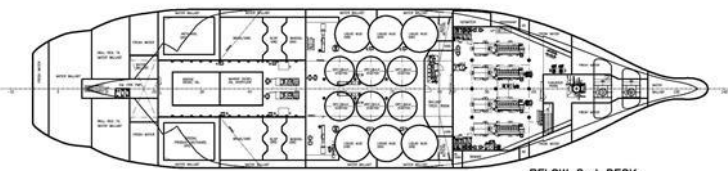
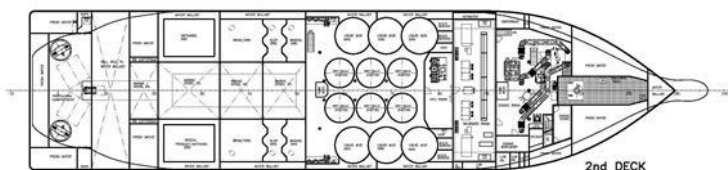
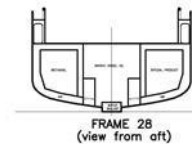
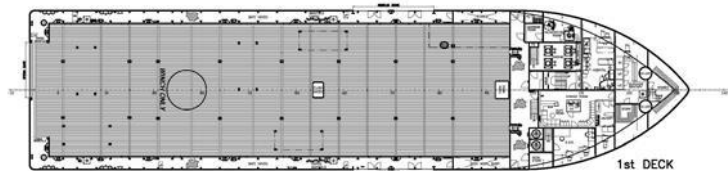
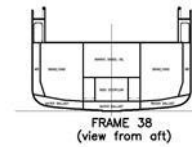
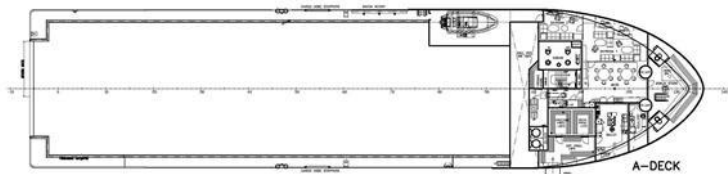
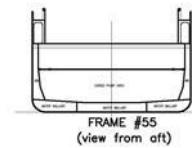
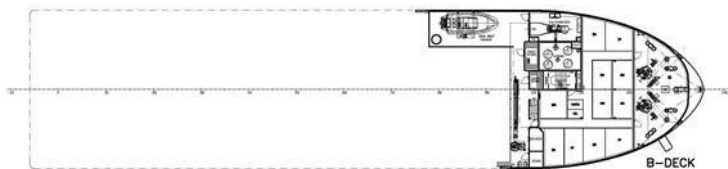
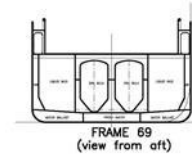
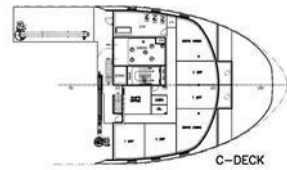
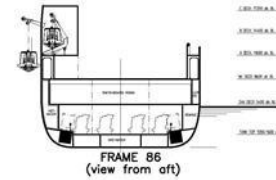
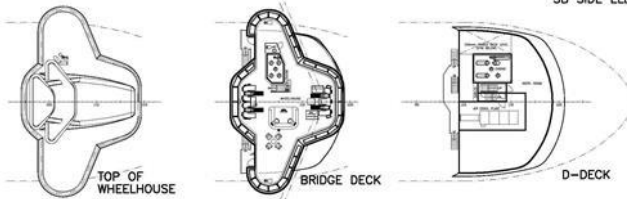
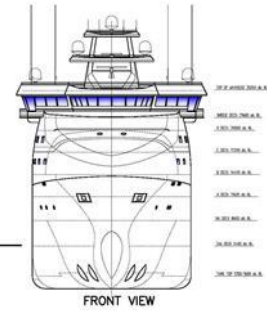
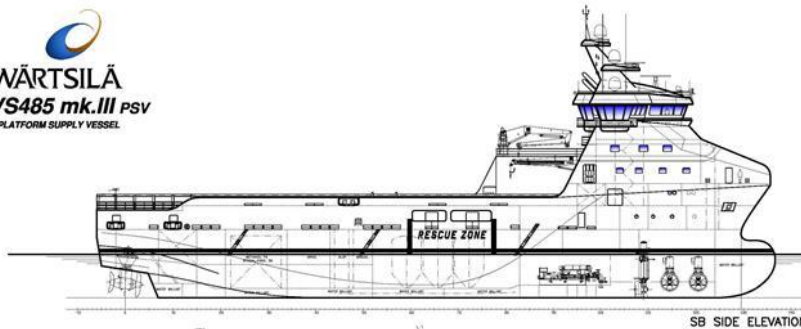
Navtex:	Furuno NX-700 B
Radar Transponder:	2x Jotron Tron SART
DSC Terminal:	Furuno FS-2570 C
AIS:	Furuno FA 150
EPIRB manual:	Jotron 45 SX
EPIRB Free Float:	Jotron Tron 40 S Mk II
Radio Station:	SSB, MF, HF, Furuno FS-2570 C
VHF Portable:	3x Jotron Tron TR 20 GMDSS
VHF Station:	Furuno FM-8800 S
UHF Portable:	5x Motorola GP 340
Inmarsat C:	Furuno Felcom 15
Intercom:	Zenitel ACM 144 66/VO
Sound System:	Vingtor VSS 111
Emergency:	Vingtor VSP 211 L
PA System:	Zenitel VPA 120, 240 and 400

Sat. Communication:	+47 21 03 82 51
Mobile Phone NOR:	+47 46 89 68 90
Mobile Phone UK:	+44 74 45 12 44 46
Vessel E-Mail:	<a href="mailto:captain@insula.remoffshore.no">captain@insula.remoffshore.no</a>

### ACCOMMODATION

Outfitted for 22 persons in spacious and comfortable facilities.	
Single Cabins:	12 with bathrooms
Double Cabins:	5 with bathrooms
Hospital:	1 Highest standard
Office:	1 fully outfitted
Day Room:	2 comfortably outfitted
Gymnasium:	1 fully outfitted
Entertainment:	In Day Rooms and all Cabins
Antiroll Tank:	1x Tank aft below 1st deck

**WÄRTSILÄ**
  
**VS485 mk.III PSV**
  
 PLATFORM SUPPLY VESSEL



CABIN PLAN			
	In	Out	TOTAL
C-DECK	8pers	4pers	12pers
B-DECK	8pers	10pers	18pers
TOTALS	16pers	14pers	30pers

PRINCIPAL PARTICULARS:	
LENGTH O.A. (INCL. BULB)	85.60 m
LENGTH BETW. PERP.	77.70 m
BREADTH	22.00 m
DEPTH TO 1st DECK	8.60 m
DEPTH TO 2nd DECK	5.40 m
DECK AREA	1000 m <sup>2</sup>
FRAME SPACING	600 mm

PLATFORM SUPPLY VESSEL			
VS485 PSV mk.III			
GENERAL ARRANGEMENT		1:200	101
WÄRTSILÄ	WÄRTSILÄ Ship Design	4438	101-001
DATE: 2011-03-08		1/1	



**“Details believed to be correct and given in good faith, but without guarantee”**

